

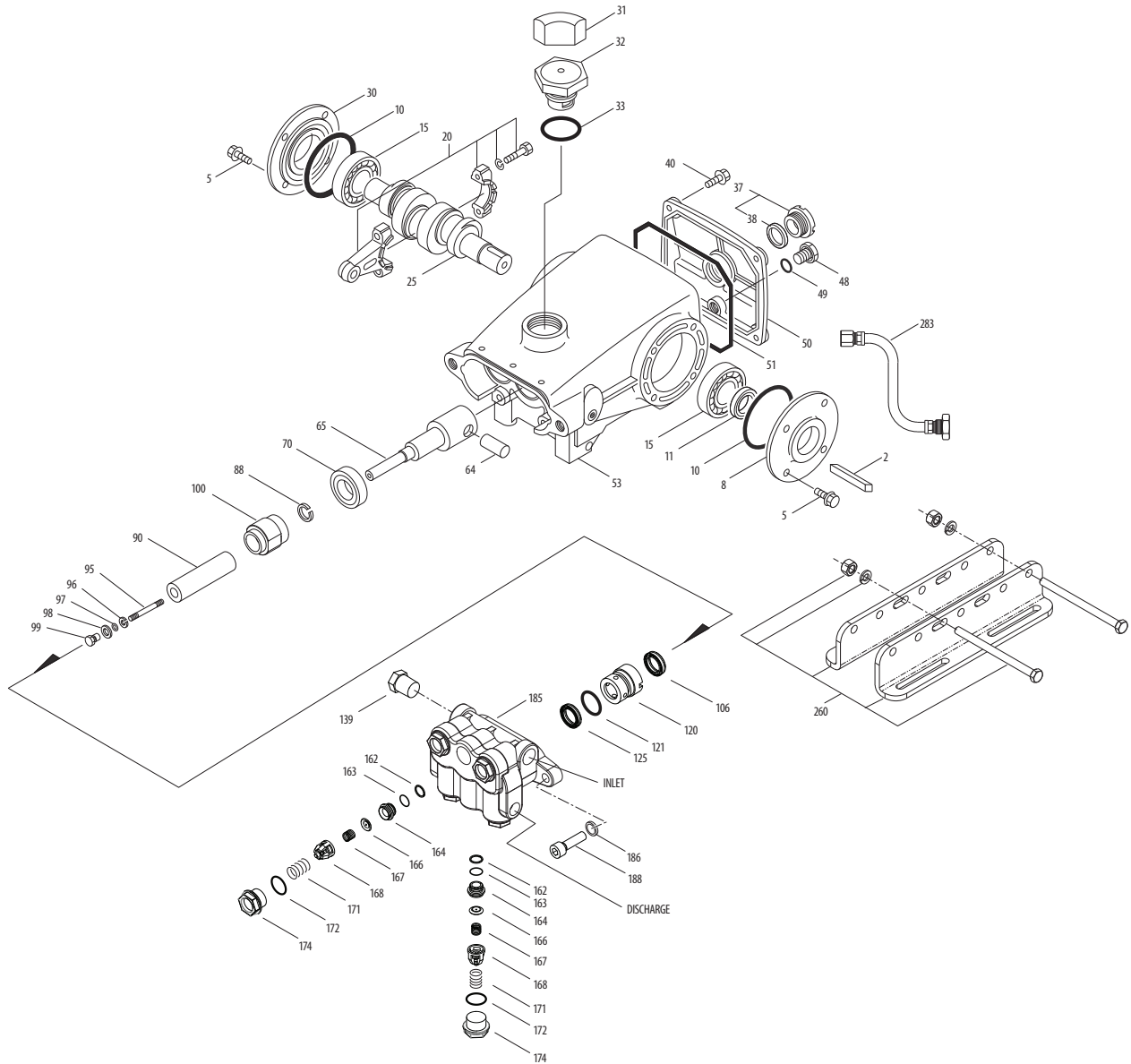
MODEL 301.CO₂



SPECIFICATIONS	U.S. Measure	Metric Measure
Flow	0.68 gpm	2.57 lpm
Pressure Range	400 to 2150 psi	28 to 148 bar
Max. RPM	450	450
*Inlet Pressure	300 to 570 psi	21 to 39 bar
Crankcase Capacity	18 oz.	0.551 l
Dimensions	11.73 x 10.0 x 5.24"	298 x 254 x 133 mm
Weight	19.8 lbs.	9 kg

* Temperature and pressure must be maintained to keep incoming CO₂ in a liquid state.

EXPLODED VIEW



(Parts List on Reverse Side)

September 2015

PARTS LIST

ITEM	PN	MATL	DESCRIPTION	QTY
2	30057	STL	Key (M6x6x25)	1
5	92538	S	Screw, HHC Sems (M6 x 16)	8
8	43344	AL	Covering, Bearing	1
10	43343	NBR	O-Ring, Bearing Cover - 70D	2
11	43222	NBR	Seal, Oil, Crankshaft	1
15	14480	STL	Bearing, Ball	2
20	45883	HS	Rod, Connecting Assy	3
25	44923	FCM	Crankshaft, Single End (M8)	1
30	44949	AL	Cover, Blind	1
31	828710	PE	Protector, Oil Cap w/Polyurethane Gasket	1
32	43211	ABS	Cap, Oil Filler	1
33	14177	NBR	O-Ring, Oil Filler Cap - 70D	1
37	92241	—	Gauge, Oil, Bubble w/Gasket	1
38	44428	NBR	Gasket, Flat, Oil Gauge	1
40	92542	S	Screw, HHC Sems (M6 x 20)	4
48	25625	STCP	Plug, Drain (1/4" x 19BSP)	1
49	23170	NBR	O-Ring, Drain Plug - 70D	1
50	48772	AL	Cover, Rear	1
51	48773	NBR	O-Ring, Rear Cover - 70D	1
53	48769	AL	Crankcase	1
64	43351	CM	Pin, Crosshead	3
65	45256	SSZZ	Rod, Plunger	3
70	43228	NBR	Seal, Oil, Crankcase	3
88	45697	S	Washer, Keyhole (M18 x 10)	3
90	43367	CC	Plunger (M20 x 72)	3
95	89653	SS	Stud, Plunger (M6 x 58)	3
96	43235	PTFE	Stud, Plunger Retainer (M6 x 58)	3
97	17399	NBR	O-Ring, Plunger Retainer - 80D	3
98	44041	SS	Gasket, Plunger Retainer	3

ITEM	PN	MATL	DESCRIPTION	QTY
99	44031	SS	Retainer, Plunger	3
100	701765	SS	Retainer, Seal	3
106	701763	SFTA	Seal, LPS w/NIH-Spg	3
120	45680	SS	Case, Seal	3
121	14200	NBR	O-Ring, Seal Case - 70D	3
125	701764	SFTA	Seal, HPS w/NIH-Spg	3
139	45156	SS	Plug, Inlet (1/2"NPT(M))	1
162	48361	D	Back-up-Ring, Seat	6
163	43358	NBR	O-Ring, Seat - 70D	6
164	44128	SS	Seat	6
166	44057	SS	Valve	6
167	44056	SS	Spring	6
168	44565	PVDF	Retainer, Spring	6
171	44832	S	Spring, Coil	3
172	17615	NBR	O-Ring, Valve Plug - 75D	6
174	49296	SS	Plug, Valve	6
185	45151	SS	Head, Manifold	1
186	15847	S	Lockwasher (M10)	2
188	87950	S	Screw, HSH Sems (M10 x 35)	2
255	30243	STZP	Mount, Direct	1
260	30611	STZP R	Mount, Rail Assembly	1
275	30944	STL	Hub,"B" (35mm w/keyway)	1
283	34334	—	Kit, Oil Drain (3/8" x 48")	1
300	76152	NBR *	Kit, Seal (Incls: 97, 106, 121, 125)	1
310	31152	NBR	Kit, Valve Preassembled (Incls:162-164, 166-168, 172)	2
—	6107	—	Oil, Bottle (21 oz.) ISO-68 Hydraulic (Fill to specified crankcase capacity prior to start-up)	1

*Review individual parts in each kit for material code identification. Italics are optional items. R Components comply with RoHS Directive. See Tech Bulletins 003, 024, 036, 074, and 083.

MATERIAL CODES (Not Part of Part Number):

ABS=ABS Plastic AL=Aluminum CC=Ceramic CM=ChromeMoly D=Acetal
 FCM=Forged Chrome-Moly HS=High Strength NBR=Medium Nitrile (Buna-N)
 NIH= High Nickle Alloy PE=Polyethylene

PTFE=Pure Polytetrafluoroethylene PVDF=Polyvinylidene Fluoride
 S=304SS SS=316SS SFTA=Special Blend PTFE TAN SSZZ=316SS/Zamak
 STCP=Steel/Chrome Plated STL=Steel STZP=Steel/Zinc Plated

⚠ CAUTIONS AND WARNINGS

All High-Pressure Systems require a primary pressure regulating device (i.e. regulator, unloader) and a secondary pressure relief device (i.e. pop-off valve, relief valve). Failure to install such relief devices could result in personal injury or damage to pump or property. Cat Pumps does not assume any liability or responsibility for the operation of a customer's high pressure system.

Read all CAUTIONS and WARNINGS before commencing service or operation of any high pressure system. The CAUTIONS and WARNINGS are included in each service manual and with each Accessory Data sheet. CAUTIONS and WARNINGS can also be viewed online at www.catpumps.com/cautions-warnings or can be requested directly from Cat Pumps.

WARRANTY

View the Limited Warranty on-line at www.catpumps.com/warranty.



CAT PUMPS

1681 - 94th Lane N.E. Minneapolis, MN 55449-4324
 Phone (763) 780-5440 · Fax (763) 780-2958 · e-mail: techsupport@catpumps.com · www.catpumps.com

For International Inquiries go to www.catpumps.com and navigate to the "Contact Us" link.